

CALLING EMERGING SMME'S IN THE BROKERAGE, INSURANCE AND AFFILIATED SERVICES SECTOR.

Emerging and previously disadvantaged SMEs in Insurance Brokerages registered with INSETA and FSCA wanting to grow their businesses to register an expression of interest to access a 12 months Business Incubation Programme sponsored by INSETA.



inseta
INSURANCE SECTOR EDUCATION
AND TRAINING AUTHORITY

EMPOWERED TO **INFLUENCE** AND **INSPIRE!**

www.inseta.org.za

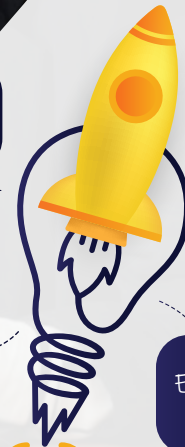


Youth-owned
businesses

Woman-owned
businesses

Businesses owned
by people living
with disabilities

Emerging insurance
companies



DO YOU WANT TO GROW YOUR BUSINESS?

BROKERAGES IN THE FOLLOWING CATEGORIES MAY REGISTER:

Insurance agents | Data analysts | Insurance loss adjustors | Financial investment advisors | Claim assessors | Fraud examiners | ICT security specialists | Underwriters | Risk financing and credit guarantee service providers.

REGISTER YOUR INTEREST BY:
05 JUNE 2022

For more info:
021 201 1215 or nonkosazana.tshaka@falsebay.org.za

TO APPLY

[CLICK HERE](#)

OR

SCAN TO APPLY



CfE RI | CENTRE FOR
ENTREPRENEURSHIP
RAPID INCUBATOR

**FALSE BAY
COLLEGE**
My dream. My college.